

# We Deliver World Class Performance

What does UBE Machinery's history of over a century of service mean to you?

It means a sincere commitment to delivering excellent products and services to the world.

## CORPORATE PROFILE



### UBE MACHINERY CORPORATION, LTD.

Head office  
1980 Okinoyama, Kogushi, Ube, Yamaguchi 755-8633 Japan  
TEL. +81-(0)836-22-0072 FAX. +81-(0)836-22-6457  
<https://www.ubemachinery.co.jp>



UBE Machinery website



2024.1

### UBE MACHINERY CORPORATION, LTD.

To contribute to better tomorrows for society by caring for the environment and continuing to generate the value that customers demand.

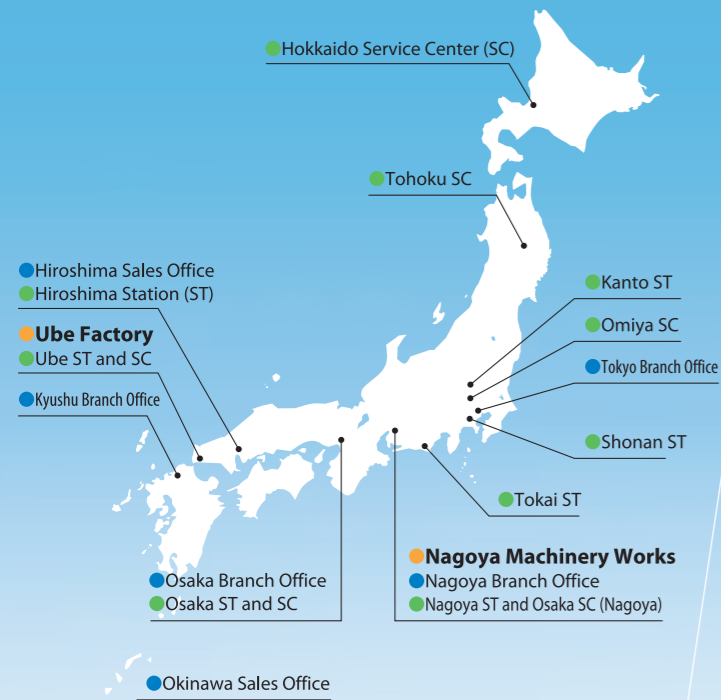
We Deliver World Class Performance

We, UBE Machinery Group, adopt as our management philosophy a sincere commitment to delivering excellence to the world, through the harmonious integration of people, products and services.

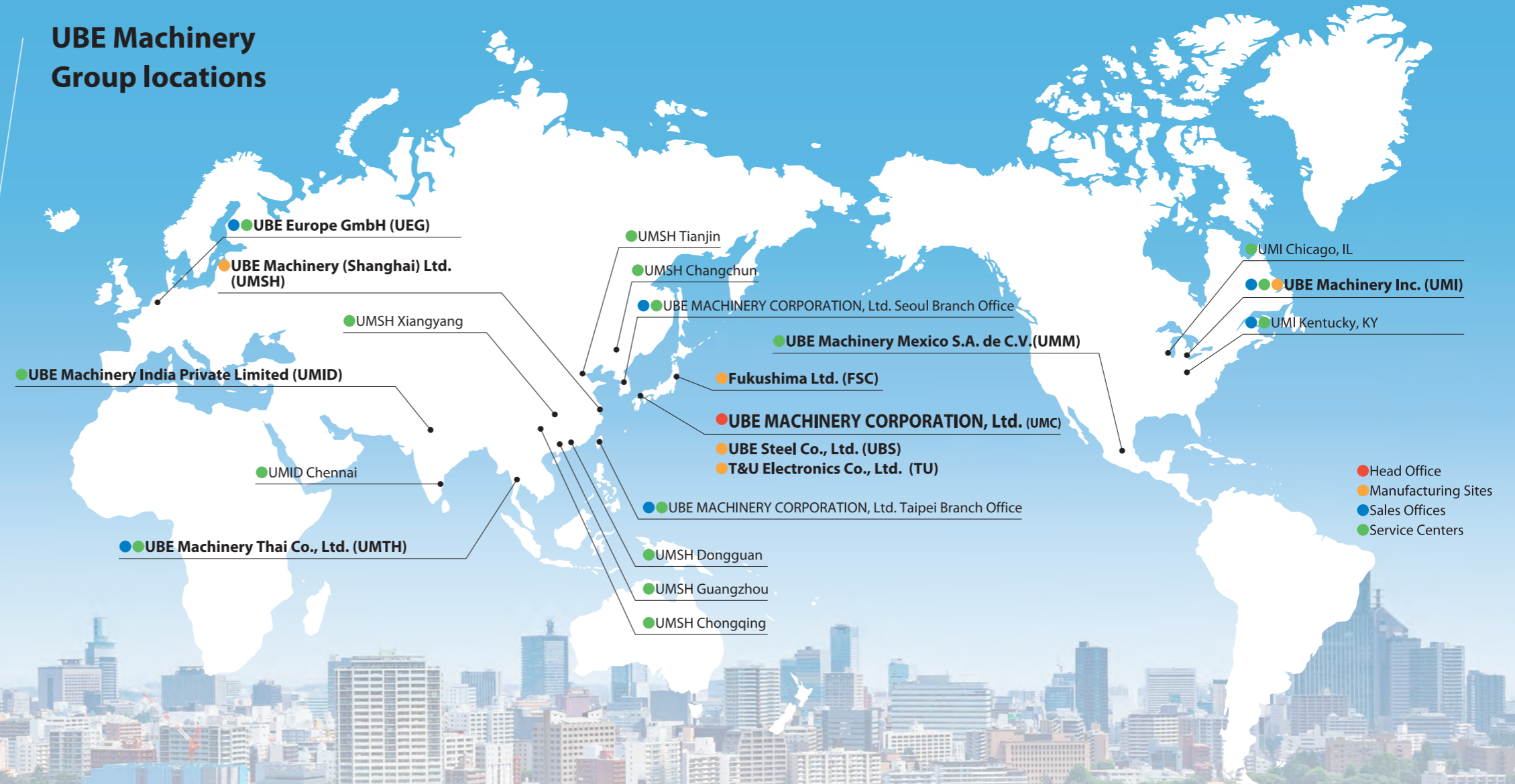
“Excellence” includes “excellent environmental performance.”

As a company backed by over a century of outstanding results, UBE Machinery is moving forward with the next century in its sights.

## UBE Machinery locations in Japan



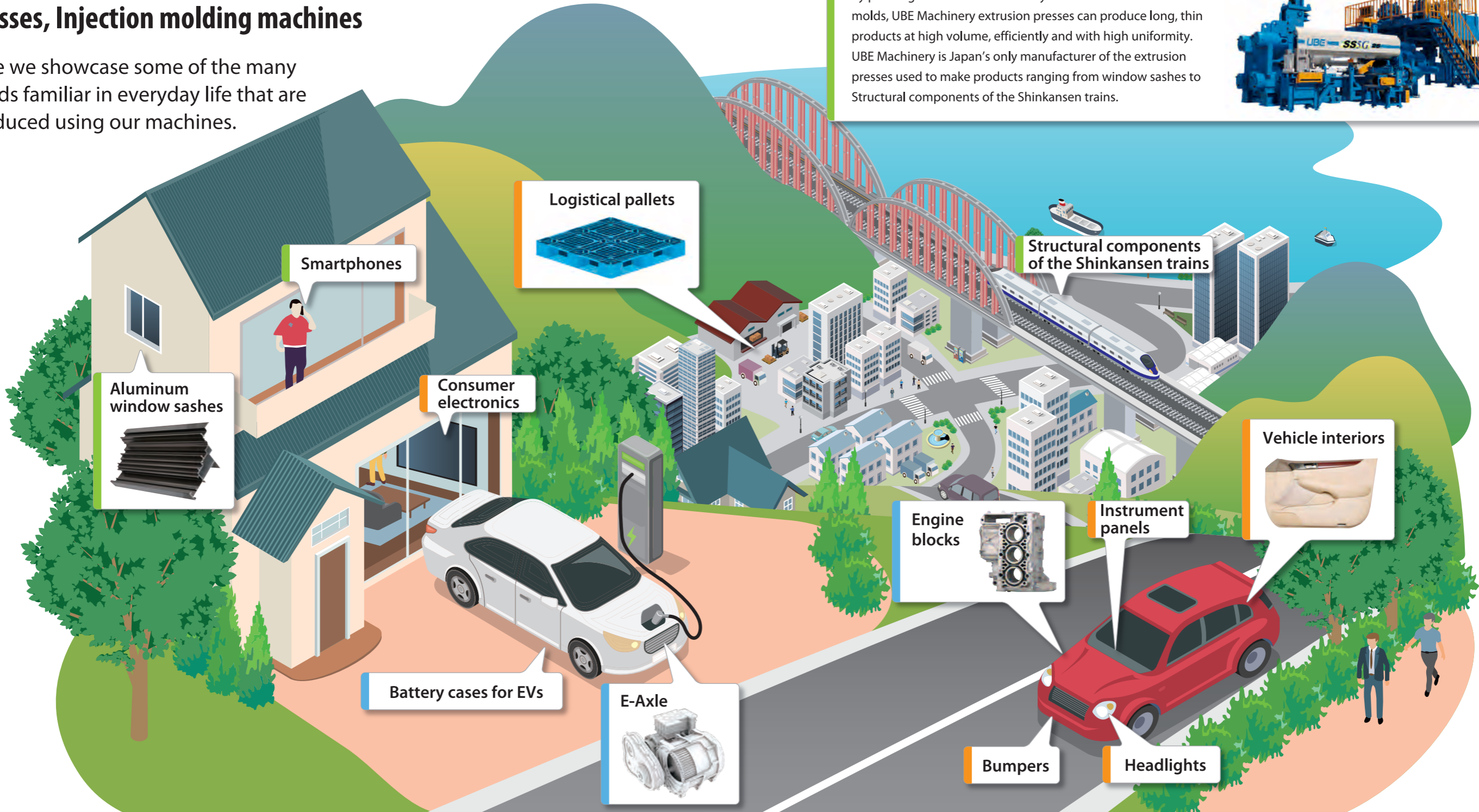
## UBE Machinery Group locations



## Die casting machines, Extrusion presses, Injection molding machines



Here we showcase some of the many goods familiar in everyday life that are produced using our machines.



### Extrusion presses

By pressing heated aluminum alloys and other materials into molds, UBE Machinery extrusion presses can produce long, thin products at high volume, efficiently and with high uniformity. UBE Machinery is Japan's only manufacturer of the extrusion presses used to make products ranging from window sashes to Structural components of the Shinkansen trains.



### Die casting machines

The machine produces large amounts of lightweight, sturdy products with high precision and efficiency by injecting molten aluminum into mold at high speed. Many aluminum products with complex shapes are produced by the die casting machine.



### Injection molding machines

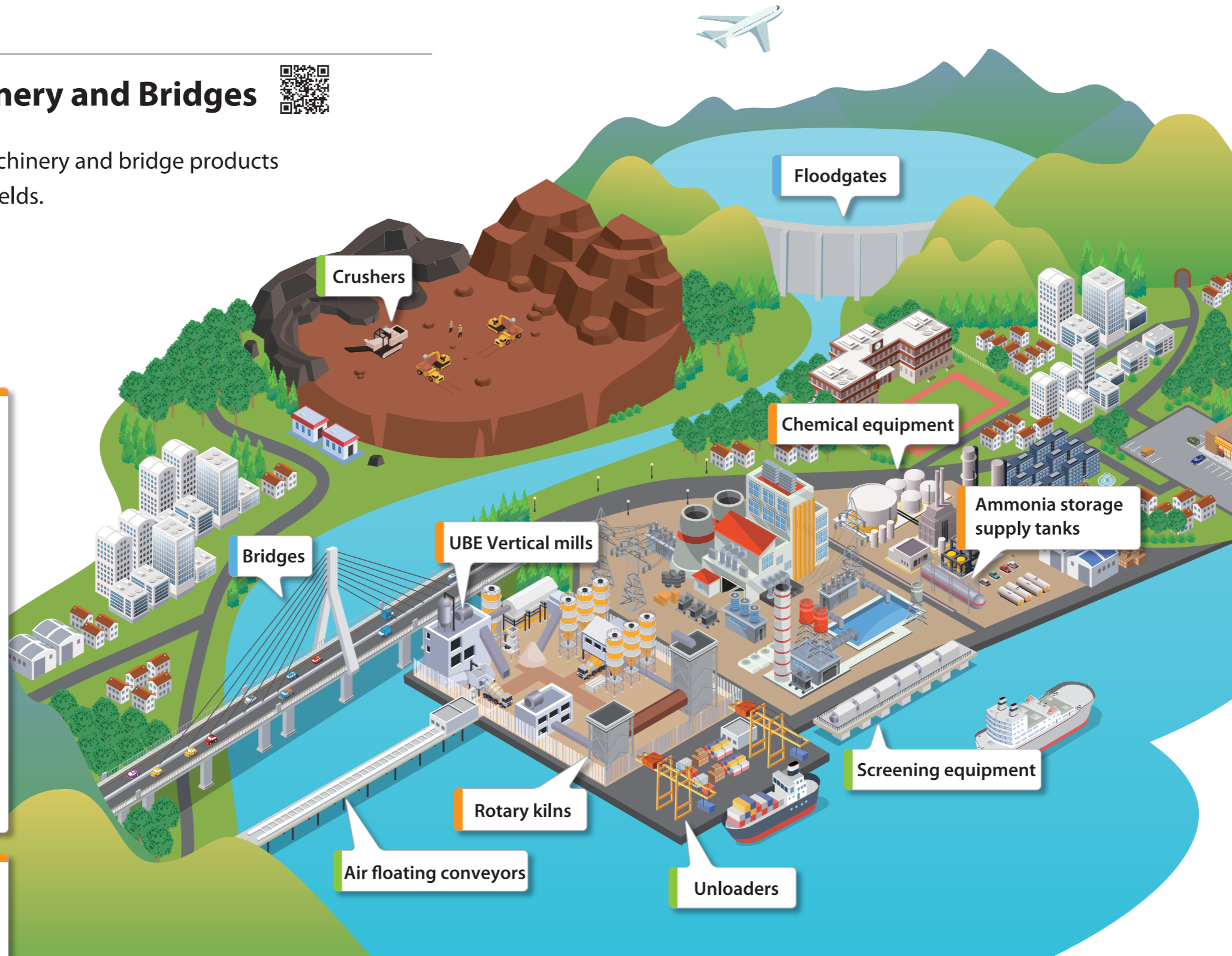
Injection molding machines melt plastic and inject it into molds, creating complex-shaped plastic products with high efficiency, quality and volume. Most of the plastic products familiar in everyday life are manufactured using these injection molding machines.



# Industrial Machinery and Bridges



Examples of industrial machinery and bridge products used in a wide variety of fields.



**UBE Vertical mills**



These machines grind a wide range of solid materials, such as limestone and other minerals, into powder.

**Chemical equipment**



Robust reaction vessels and evaporators with unique mechanisms are used to fabricate a wide range of materials, from industrial materials such as electronic materials and plastic feedstocks to foodstuffs such as candies and jams.


**Ammonia storage supply tanks and Rotary kilns, etc.**

Applied in a wide range of industries, these machines include equipment for production of cement, steel, nonferrous metals and other materials; equipment for storage and supply of ammonia, a substance expected to see growing use as a next-generation fuel; and equipment for storage and transport of biomass fuel for power plants, which contributes to carbon neutrality. Sample products: rotary kilns, dryers, drum mixers, ammonia storage and supply tanks.



**Air floating conveyors and Unloaders, etc.**

This machinery is used for storage and transport at power plants, port facilities, factories, etc. UBE Machinery's unique Air floating conveyors do not generate dust or fallen powder, so they are environmentally friendly and are used in marine transport. Sample products: conveyors, cranes, silos, ship loaders and unloaders, etc.




**Bridges and Floodgates**



UBE Machinery constructs beautiful and functional steel bridges throughout Japan, with many becoming famous attractions. We also manufacture floodgates and harbor structures.

**Crushers**



These machines crush rocks down to the size of gravel or sand for use in concrete. UBE Machinery is the sole agent in Japan for Metso (Finland), the world's top brand in the field.

**Screening equipment**



These devices are installed on seawater inlets at power plants, steel mills, chemical plants, etc. where they collect jellyfish and seaweed as well as plastics and other trash.

## After-sales Service



At UBE Machinery, our after-sales service rests on the three pillars of RCU: repair, consulting and upgrade.

UBE Machinery offers after-sales service as only a manufacturer can.

Thanks to synergy born of seamless coordination among design, manufacturing and after-sales service, UBE Machinery provides the latest in after-sales service, quickly and comprehensively, from sites around the world directly to customers.

### Working with Customers to Enhance Equipment Value

UBE Machinery works with customers to address a wide range of concerns and find solutions, thereby enhancing the value of equipment. Aiming always to stay one step ahead of customer expectations, we take responsibility for supporting our equipment to the end of its working life.



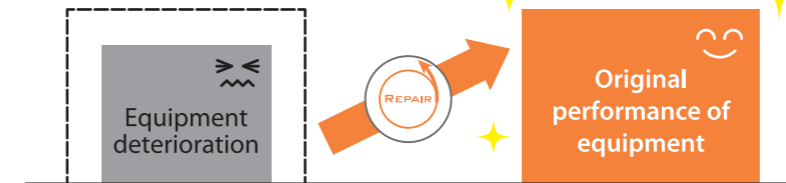
Whatever your issues or concerns with equipment, please do not hesitate to contact us for consultation.



## REPAIR Repair Services

### Recovery of equipment to original performance levels

- Overhaul
- Replacement of consumables
- Repair of damaged parts
- Readjustment of machine performance

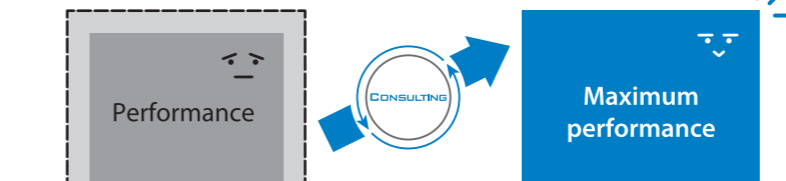


Transfer and installation of extrusion presses

## CONSULTING Consulting Services

### Maximization of equipment performance

- Equipment diagnosis and analytical diagnosis
- Diagnosis of mechanical performance
- Presentation of seminars, etc.

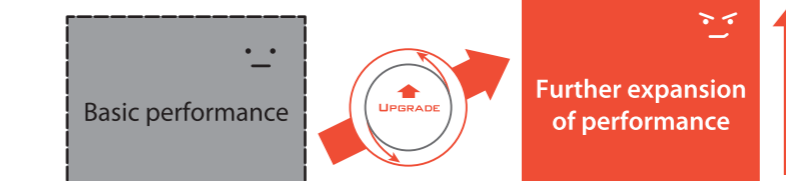


Analysis and diagnosis of vibration

## UPGRADE Upgrade Services

### Further expansion of equipment performance

- Retrofitting (updating of controllers)
- Improvement of energy-saving performance
- Improvement of efficiency
- IoT implementation



Fine-mist cooling systems for kilns

# Technology Development



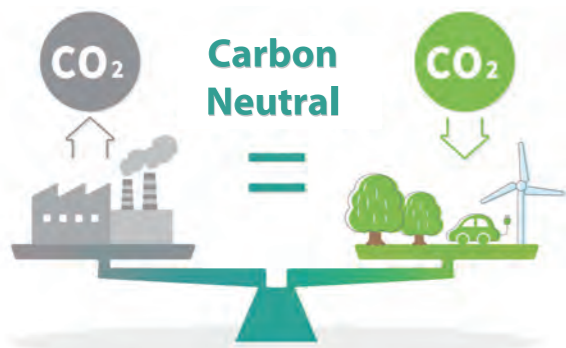
Shape the future of the business with an eye on current trends.

**People and technology will continue to play a leading role in the next 100 years.**

At UBE Machinery Group, we are committed to developing elemental technologies and other technologies to meet the needs of our customers at any given time, with an eye on trends that change with the times.

## Trends of the times that are currently attracting

### Carbon neutral (CN)



We are accelerating the evolution of xEV technology and expanding investment in green energy.

### Digital transformation (DX)



The Company is also transforming production with digital information.

## Utilities to assist your business development



### IM Solution Center

At the IM Solution Center Nagoya office, visitors experience the use of our molding-solution technologies using molding demonstration equipment.



### DC Solution Center

The DC Solution Center at Ube Head Office develops elemental technologies for aluminum casting. The Center also offers a die-casting technology school.



### Industrial Machinery Technology Center

The Industrial Machinery Technology Center at Ube Head Office houses experimental units equipped with features unique to UBE Machinery. These machines include vertical mills, dryers and floating conveyors.

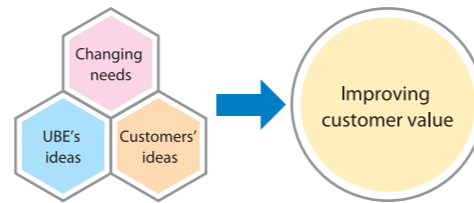


### Chemical Machinery Technology Center

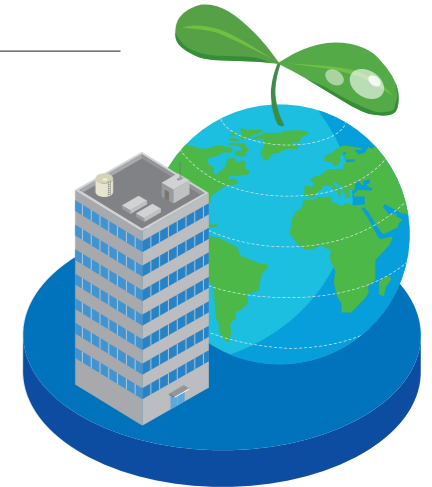
The Chemical Machinery Technology Center opened at Ube Head Office in November 2022. Permanently installed in the Center are test units of an evaporator and a polymerization vessel possessing features unique to UBE Machinery.

## Solutions for each customer Issue

At UBE Machinery, we keep an eye on shifting trends and strive to develop the elemental technologies and technologies that meet customers' varying needs. The solutions we develop range from features that solve customers' specific problems to testing equipment for proving new applications. Through these efforts UBE Machinery aims to build a future for the operations of both customers and the company.



# Sustainability



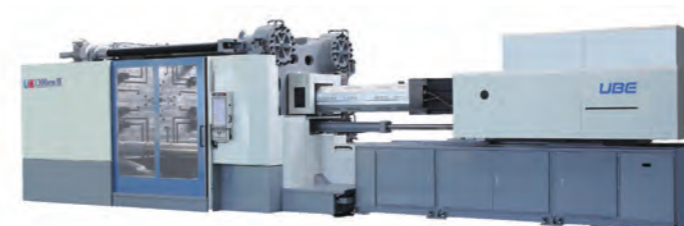
We pursue the values our customers demand while caring for the environment.

At UBE Machinery, our purpose is "To contribute to better tomorrows for society by caring for the environment and continuing to generate the value that customers demand." We regard it as our mission to contribute to social issue solutions, such as achieving the Sustainable Development Goals (SDGs) and carbon neutrality.

## SUSTAINABLE DEVELOPMENT GOALS

### Business Activities

We strive to create products that consume fewer resources, such as electricity, water and oil, and to reduce the CO<sub>2</sub>, noise and dust generated when our products are used.



Examples of UBE Machinery products that contribute to carbon neutrality



Achieving sustainable production with attentive service

### Social Contribution Activities

UBE Machinery is contributing to society in many ways to advance sustainable development. The company actively employs disabled persons, strives for harmony with regional communities, empowers female employees and promotes health management. In addition, our highly skilled employees present lectures at technical high schools in Yamaguchi Prefecture.



Disabled employees working at an indoor hydroponic farm



UBE Machinery employees demonstrating welding technique at a technical high school in Yamaguchi Prefecture